

# WALL PROTECT INJECT LIQUID

Waterproof wall injection against rising damp



## Product description

A colourless professional injection fluid with a high percentage of active waterproofing agents for treating above-ground interior and exterior walls against rising damp. It forms a lifelong waterproof barrier that prevents rising damp from penetrating further. **WALL PROTECT INJECT LIQUID KIT** contains all the necessary materials. 5 l and 10 l refills are available separately.

## Application

For use on above-ground interior and exterior brick walls. Avoids the need to install a physical damp-proof membrane.

### Advantages

- Provides a lifelong barrier
- High percentage of active substances
- Wall continues to breathe
- For interior and exterior walls

## How much product do I need?

Use about 1.5 litres per running metre for 10-cm thick walls.  
See also the calculator on our website [www.aquaplan.com](http://www.aquaplan.com).

## Handy tips?

- It can only be used on solid-brick interior and exterior walls. Not for use on high-speed building bricks or cavity walls.
- Store in a cool (max. 20°C) and frost-free place in a hermetically sealed container.
- Avoid spilling on tiles, glass, wood, etc. If spills do occur, clean immediately with methanol to prevent staining.
- Use only in well-ventilated areas.
- Never inject into walls that are completely saturated with water. There is no room in the bricks for the injection fluid. In this case, wait for a better time, such as summer or autumn. That is when walls are usually damp but not saturated.

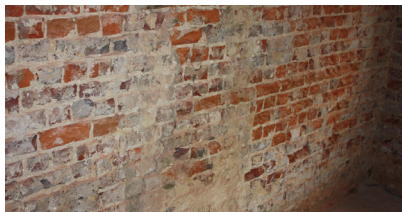
Material	Colour	Contents	Coverage	Drying time	Coats	Overpaintable
potassium methyl silicates	Transparent	5 l / 10 l / KIT	About 1.5 l per running metre on 10-cm thick walls	48 hours	n/a	Yes

# WALL PROTECT INJECT LIQUID

Waterproof wall injection against rising damp



INSTRUCTIONS



## What do I need?



## How do I prepare the surface?

- Remove skirting boards, plaster and wallpaper. Inspect the cove joints and repair them if necessary to prevent product leaks.
- Drill 10 mm diameter injection holes every 12 cm in a horizontal joint 5-7 cm above the floor at an angle of 10° to 15°. Drill to a depth of 4/5 of the wall thickness. Repeat the same procedure for walls thicker than 40 cm on the other side of the wall.



## How do I use the product?

- Attach the angled hose to the injection tube and hang the tubes 50 cm above each drill hole. Insert the other end of the hose 2 to 3 cm into the corresponding drill hole. Never insert injection tubes directly into a drill hole. The distance is necessary to ensure that the liquid penetrates the wall.
- Using quick cement or mastic, seal the gap between the hose and the wall so that no product can drain out. If necessary, roughen the hose to improve the adhesion of the sealant.
- Fill the injection tubes and keep them filled for 1 hour. Repeat the treatment after 24 hours.
- The injection is complete after 48 hours. Remove the hoses and seal the holes.
- The amount required is approximately 1.5 litres per running metre for a 10-cm thick wall.



## Would you like more information?

We are ready to answer all your questions.

Feel free to contact us:

Belgium: 03 248 30 00 or [info@aquaplan.com](mailto:info@aquaplan.com)

The Netherlands: 0162 42 29 00 or [verkoop-dhz@martensgroep.eu](mailto:verkoop-dhz@martensgroep.eu)

Website: [www.aquaplan.com](http://www.aquaplan.com)



Usage	Drying time	Protection
15l.m. → 10cm	48 hrs	