

GARDEN PROTECT WOOD

Waterproof protection for all underground materials



PRODUCT DATA SHEET



Product description

A universal, elastic and solvent-free bitumen emulsion. Due to its high resistance to the aggressive influences of groundwater (humus, saline solutions, dilute organic acids and alkalis), **GARDEN PROTECT WOOD** is the ideal protection for all materials that come into contact with groundwater.

Application

For use on all materials in cement, wood or metal such as garden posts, fencing, railings, cisterns, drainpipes, etc.

Advantages

- › Extends the life of objects
- › For cement, wood and metal
- › Excellent adhesion even on damp substrates
- › Environmentally friendly and safe to use

How much product do I need?

Use 2.5 kg to treat approx. 1.5 m².

See also the calculator on our website www.aquaplan.com.

Handy tips?

- Store in a cool (max. 20°C) and frost-free place.
- Do not apply if the ambient or substrate temperature is below +5°C or if rain is expected during the curing process.
- Stir well before use and close the container carefully after use.
- Clean your tools with water immediately after application. After drying, use white spirit or turpentine.

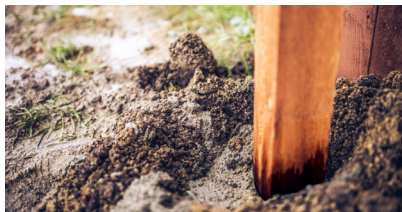
Material	Colour	Contents	Coverage	Drying time	Coats	Overpaintable
Bitumen emulsion	Black	2,5 KG	About 1,5 m ²	24 hrs	2	No

GARDEN PROTECT WOOD

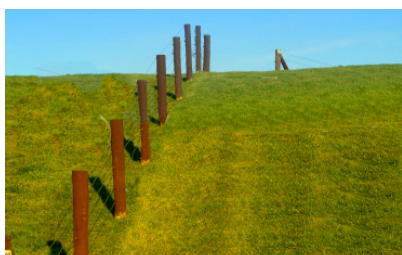
Waterproof protection for all underground materials



INSTRUCTIONS



What do I need?



How do I prepare the surface?

- Ensure that the substrate is free of dust and grease.
- Lightly moisten the surface with water.



How do I use the product?

- Apply a first coat of **GARDEN PROTECT WOOD** diluted with approx. 10% water with a brush or roller at a rate of approx. 1 kg/m². Ensure that each coat is protected from rain for at least 4 hours.
- After the first coat has fully cured, apply a second, undiluted coat of **GARDEN PROTECT WOOD** with a brush or roller at a rate of approx. 1 kg/m²/coat. This takes about 24 hours. Depending on the porosity of the substrate and the desired degree of protection, a third, undiluted coat can be applied.

Usage	Drying time	Cleaning
2,5 KG ± 1.5 m ²	24 hrs	H ₂ O

Would you like more information?

We are ready to answer all your questions.

Feel free to contact us:

Belgium: 03 248 30 00 or info@aquaplan.com

The Netherlands: 0162 42 29 00 or verkoop-dhz@martensgroep.eu

Website: www.aquaplan.com

