

EPDM RUBBER ROOF

Your made-to-measure roof in one piece



PRODUCT DATA SHEET



Product description

The ideal single-ply roof covering in one piece for all flat and slightly pitched roofs. It's suitable for both new construction and the renovation of existing roofs. EPDM roofing is very easy to install without a roofing torch, making it ideal for DIY enthusiasts.

Application

Suitable for all flat and slightly pitched roofs, for both renovation and new construction.

Advantages

- ▶ EPDM membrane in 1 piece
- ▶ Flexible and permanently elastic
- ▶ For professional and DIY roofers
- ▶ Root resistant, suitable for green roofs



How much product do I need?

You can order a membrane in one piece that is minimum 1.40 m² and maximum 210 m². See the calculator on our website www.aquaplan.com.

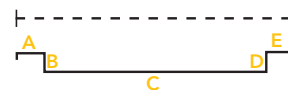
How to measure and order EPDM roofing?

MADE-TO-MEASURE ROOF is available in the following widths (in metres): 0.7, 1.4, 2.8, 3.5, 4.2, 5.6 and 7. The required length is ordered in multiples of 50 cm (Belgium) or 10 cm (The Netherlands). The length is min. 2 m and max. 30 m.

The rubber roof is always delivered in one piece. Roofs of at least 2.8 m are achieved in the factory by vulcanising several 1.4 m strips into 1 piece of max. 7 m wide by 30 m long = max. 210 m².

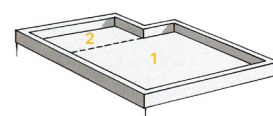
• Rectangular roof and/or gutter

Measure the total "unfolded" length of the roof = A+B+C+D+E and add 20 cm (= excess). Repeat this procedure to measure the total "unfolded" width.



• L-shaped roof

An L-shaped roof can also be installed using 1 piece, but the most economical way is to work with 2 pieces. Measure the total "unfolded" length and width measurements (A+B+C+D+E) + 20 cm. The overlap between the two pieces will be created with the upstand and excess (= 20 cm) rubber.



Material	Colour	Contents	Coverage	Drying time	Coats	Overpaintable
EPDM	Black	From 2 running metres with a width of 0.7 m	Min. 1.4 m ² to max. 210 m ² See our calculator	/	1	No

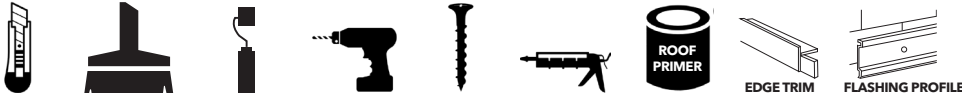
EPDM RUBBER ROOF

Your made-to-measure roof in one piece



INSTRUCTIONS

What do I need?



Available preformed fittings and accessories?

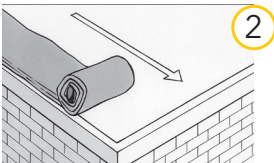
- Corner pieces for skylights and chimneys.
- Universal collar: waterproof finish of round roof glands, vent pipes, flue pipes, etc.
- Horizontal rainwater drains with city outlet
- Vertical rainwater drains - round built-in
- **ROOF GLUE EPDM**: solvent-free adhesive for bonding **EPDM RUBBER ROOF** coverings on the most commonly used roof substrates, such as bitumen, roof insulation panels, wood, concrete, etc. and for glueing overlaps, edge trim, fittings and accessories.

How do I prepare the surface?



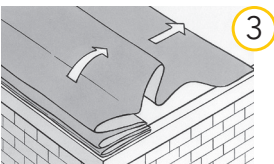
1 Ensure the substrate is dry and free of dust, dirt, sharp items, grease, etc. Anything that could damage the **EPDM** roof covering or hinder the optimum adhesion of the **ROOF GLUE EPDM**. Impregnate the substrate with **ROOF PRIMER EPDM**, **ROOF PRIMER SBS** or **ROOF PRIMER ROOFING** at a rate of approx. 5 m²/litre.

Use a brush or roller for this, and allow a drying time of about 3 hours

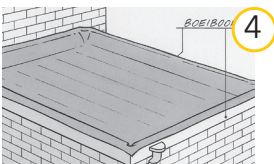


2 The ordered **EPDM** roof covering is delivered in 1 piece and has no top or bottom side. In other words, the membrane can be used on either side. Install the EPDM within 6 months of delivery and store it in a dry and frost-free place.

Roll out the **EPDM** roof covering.



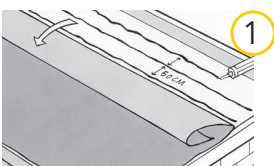
3 Unfold the membrane on the roof.



4 Make sure the membrane is evenly distributed over the entire surface and that there is about the same amount over all the edges. Allow the **EPDM** to "rest" for about 1 hour to neutralise the tension created in the factory.

INFO : If insulating the roof, always use load-bearing, pressure-resistant and dimensionally stable IKO enertherm PIR insulation panels. See www.enertherm.eu.

How do I apply the product?



1 Fold or roll back the shortest part of the **EPDM** roof covering halfway.

Draw a chalk line or other marking every 50 cm, starting at the edge of the roof, to ensure that the glue is distributed evenly.

Starting at the marking closest to the folded back roofing, apply a continuous bead of **ROOF GLUE EPDM** using a caulking gun. Place the membrane on the bead of glue and press firmly with a hard roller. At the next marking, 50 cm further, apply a bead of glue and repeat the above until you reach the edge of the roof.

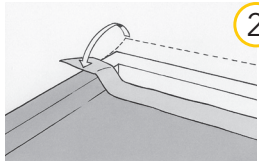
The roof upstands will be done last. Repeat this step with the other half of the roof covering.

EPDM RUBBER ROOF

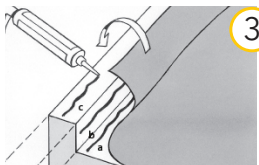
Your made-to-measure roof in one piece



INSTRUCTIONS



2 Fold back the **EPDM** roof covering slightly along the roof.

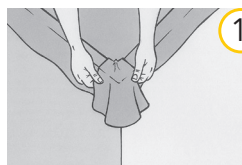
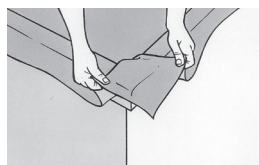


3 Apply a bead of **ROOF GLUE EPDM** to the roof surface just in front of the vertical upstand. Cover with the EPDM membrane and roll firmly. Then apply a bead of **ROOF GLUE EPDM** on the vertical upstand and the top of the roof edge. Cover with the EPDM membrane and press firmly.

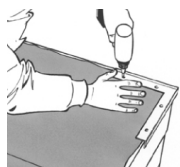


4 Fold the **RUBBER ROOF** membrane into a point at the corners.

How do I finish an inside corner?

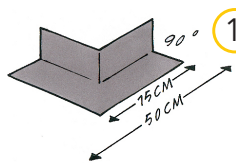
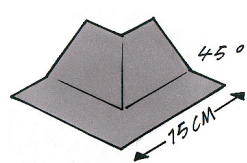


1 Fold the **RUBBER ROOF** membrane flat on the roof edge. The resulting fold can be sealed with **ROOF GLUE EPDM**.

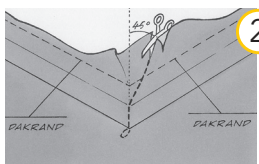


2 Apply the aluminium edge trim and preformed corners and screw them in place. Refer to the instructions "Roof edge finishing using the overlay method".

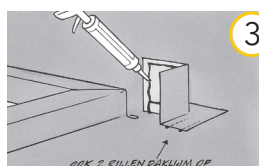
How do I finish an outside corner?



1 Always use preformed outside corner pieces to prevent any leakage. Two models are available:
- For skylights, etc. with 45° inclined corners and 15 cm length.
- For chimneys, etc. with 90° right-angled corners and lengths of 15 or 50 cm.



2 Apply the **RUBBER ROOF** membrane as described above. Then cut the **RUBBER ROOF** membrane at a 45° angle until you reach the roof surface then go back a little, rounding off the cut. This prevents any tears in the **RUBBER ROOF** membrane caused by possible rough handling during installation.



3 Glue the roof edges as described under "Roof edge finishing and gluing". Then glue the preformed outside corner with **ROOF GLUE EPDM**. On the back side of the corner piece, apply continuous beads of glue on both the vertical and horizontal part, as shown on the diagram. Ensure that the outer bead of glue is always applied about 2 cm from the edge. Apply the corner piece and press down firmly with a roller. When glued correctly, a small amount of glue should always protrude from under the corner piece. The excess glue can be carefully removed.

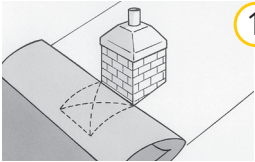
EPDM RUBBER ROOF

Your made-to-measure roof in one piece

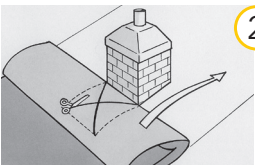


INSTRUCTIONS

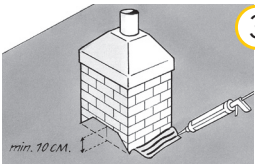
How do I install EPDM on roofs with chimneys and skylights?



- 1 Unfold the **RUBBER ROOF** membrane over the largest part of the roof (the part that has no interruptions up to the chimney or skylight). Fold the remaining section over so that the fold is flush against the chimney or skylight.

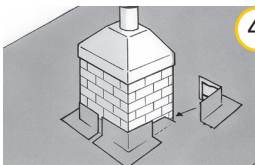


- 2 Determine the size of the chimney or skylight on the roof surface. Use chalk to mark these exact dimensions on the folded section of **RUBBER ROOF** membrane. Also draw the diagonal lines as shown on the diagram and cut them open, creating 4 points.



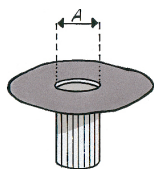
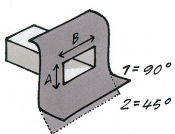
- 3 Pull the **RUBBER ROOF** membrane over the chimney, skylight, etc. and unfold the remaining section; cover the rest of the roof. The newly cut points should lean against the vertical side of the chimney/skylight. Cut the tops off the points to min. 10 cm above the roof surface. Glue them with at least 3 beads of **ROOF GLUE EPDM**:

- The first bead is placed on the horizontal roof surface about 2 cm from the corner/upstand.
- The second bead halfway up the flap.
- The third bead about 2 cm below the top edge. Press the **RUBBER ROOF** membrane against the upstand and press firmly with a roller.

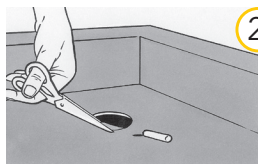
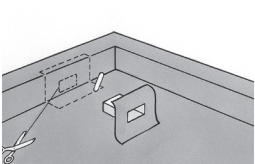


- 4 Then install the preformed outside corners. See the section "Finishing an outside corner".

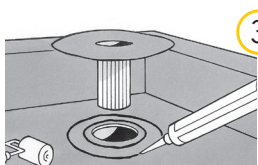
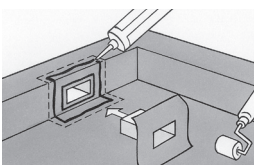
How do I install a rainwater drain?



- 1 Always use the preformed rainwater drains because they guarantee a perfect watertight finish. Two models are available:
- Rectangular, horizontal drain with city outlet 90° or 45°.
 - Round, vertical, built-in drain.



- 2 Determine where to place the drain, draw its outline with chalk, and cut out the segment where the drain will be. If necessary, cut the drain pipe to the correct length.



- 3 Then apply two continuous beads of **ROOF GLUE EPDM**: one around the cut-out hole and one inside the marked outline. Ensure that the beads of glue are always applied about 2 cm from the side to obtain good adhesion. Cover with the rainwater drain and press firmly. Always ensure that a small amount of glue protrudes from under the drain. Carefully remove the excess glue.

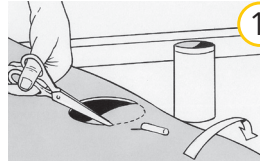
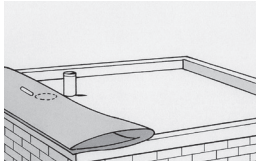
EPDM RUBBER ROOF

Your made-to-measure roof in one piece



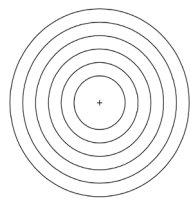
INSTRUCTIONS

How do I finish a round roof gland with a universal collar?



1

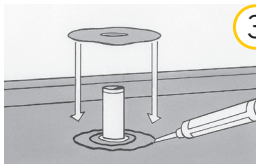
Cut the round opening out of the membrane and pull it over the pipe. Finish with a universal collar. Universal collars ensure that round roof glands, like ventilation and vent pipes, are perfectly waterproof.



Roof gland diameter:	Circle to cut out:
50 - 70 mm	20 mm
71 - 110 mm	30 mm
111 - 130 mm	40 mm
131 - 160 mm	50 mm
161 - 190 mm	60 mm
191 - 220 mm	70 mm

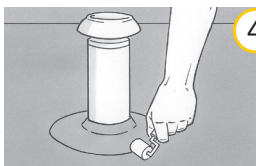
2

Measure the diameter of the roof gland and cut out the corresponding circle, which is printed on the collar. The cut-out hole should always be about 1/3 of the diameter of the gland.



3

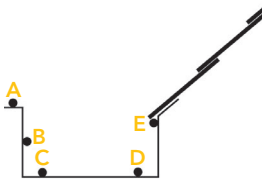
Draw the collar on the roof surface with chalk. Apply a bead of glue 2 cm inside the chalk line and around the hole. Pull the collar under tension over the pipe until it is correctly positioned on the roof and the collar forms an upstand around the pipe.



4

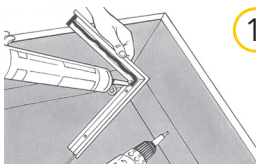
Press the collar firmly with a pressure roller so that a small amount of glue protrudes from under it.

How do I apply the EPDM RUBBER GUTTER with a standard width of 70 cm?



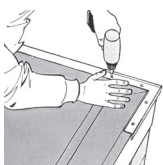
- Prepare the substrate as indicated for the **EPDM RUBBER ROOF**.
- Apply 5 beads of **ROOF GLUE EPDM** to points A - B - C - D - E.
- Cover with the **EPDM** membrane and roll firmly.
- One tube of **ROOF GLUE EPDM** is good for about 1.5 running metres of gutter.

How do I finish the roof edges?



1

Finish the roof edge with universal edge trim using the overlay method.



2

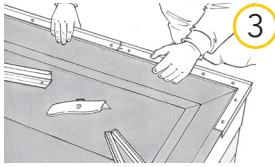
Place the trim on top of the **EPDM** roof covering. Always start in the corner and use the 90° preformed corner pieces. Install the supplied connecting pieces, which ensure that the various pieces of edge trim/components don't touch each other. They allow the material to expand or contract when the temperature fluctuates. Pre-drill the corner pieces on the marking line (top), about 4 cm from the side and about 2 cm from the corner (total of 4 holes). Alternatively, you can use Aquaplan's 35 mm **SELF-TAPPING SCREWS**.

EPDM RUBBER ROOF

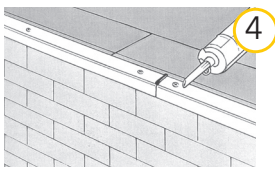
Your made-to-measure roof in one piece



INSTRUCTIONS



3 Fill the sealant gutter, located at the bottom of the corner piece or edge trim, with **ROOF GLUE EPDM**. Also put glue on each end/connection. Screw the corner piece in place. Pre-drill the edge trim on the marking line (top) every 40 cm, starting and ending 4 cm from the end. Alternatively, use Aquaplan's **SELF-TAPPING SCREWS**. Fill the sealant gutter as described above. Slide the edge trim over the connection pieces of the corner piece up to the protruding marking point in the middle of the connection piece. A small gap between the trim is necessary for expansion and contraction of the edge trim.



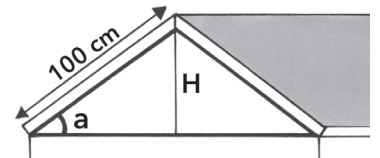
4 Screw it in place and fill the seams with **ROOF GLUE EPDM**.

How do I finish a wall upstand?

- Prepare the substrate with **ROOF PRIMER EPDM**, **ROOF PRIMER SBS** or **ROOF PRIMER ROOFING**.
- Once dry, run the membrane about 15 cm up the wall.
- Always ensure the **RUBBER ROOF** membrane is bonded to all roof edges and wall upstands with at least 3 beads of **ROOF GLUE EPDM** on the roof surface and against the upstands.
- For a waterproof finish, fix the **FLASHING PROFILE** with Aquaplan **NAIL PLUGS** and seal the top with **ROOF GLUE EPDM**.

Handy tips?

- The current system is intended for flat and slightly sloping roofs of up to max. 5° pitch. For a steeper pitch with a maximum of 45° and a surface area of max. 10 m² (to prevent sagging), the membrane must be mechanically fixed at the top or extended over the ridge of the roof. To ensure smooth rainwater evacuation, the beads of glue should be applied from top to bottom.
- **EPDM RUBBER ROOF**
 - Safe system (no flames)
 - Tear-proof, rip-proof, shrink-proof and rot-proof
 - Low maintenance
 - Good resistance to temperature fluctuations and high temperatures (-40°C to +120°C)
 - Recyclable, environmentally neutral
 - Suitable for domestic use such as washing machine, WC, shower, etc.
 - Prevent falls and take safety precautions near edges, openings in the roof and when using a ladder.
- **ROOF GLUE EPDM**
 - Do not apply if the ambient or substrate temperature is below +5°C. Store in a frost-free place.
 - Cut the nozzle of the tube at an angle to obtain an opening of approx. 6 to 7 mm.
 - 1 tube is good for approx. 2 m² of roof surface, which corresponds to 3 beads of glue of approx. 2 metres.



Width	Length
0,7 m	Min. 2 m
1,4 m	Max. 30 m
2,8 m	
3,5 m	
4,2 m	
5,6 m	
7 m	

Would you like more information?

We are ready to answer all your questions.

Feel free to contact us:

Belgium: 03 248 30 00 or info@aquaplan.com

The Netherlands: 0162 42 29 00 or verkoop-dhz@martensgroep.eu

Website: www.aquaplan.com

