

ROOF RENEW

Waterproof roof protection



PRODUCT DATA SHEET



Product description

A waterproof coating, extra reinforced with microfibres, for the seamless repair and renovation of old and damaged bitumen roofs and gutters. It penetrates the pores, fills small imperfections and cracks, and assumes any substrate contour. When dry, it forms a highly adhesive and slightly elastic coating that protects the existing roof covering from air pollution and temperature fluctuations. This extends the life of bitumen roofs by at least 3 years. It can also be applied during frost.

Application

For use on all types of bitumen roofing. It can also be used on wood, masonry, cement plaster, concrete and metal. It also protects buried metal objects and car undercarriages from corrosion.

Advantages

- › Extends the life of your existing roof covering
- › Reinforced with fibres
- › Repairs, renews and maintains
- › Excellent expansion and contraction capacity without cracking
- › Not temperature sensitive, repairs can be carried out in freezing conditions
- › Anti-corrosive action: protects metal from groundwater

How much product do I need?

About 0,5 kg/m² per coat

Handy tips?

- **ROOF RENEW** is made of bitumen and elastic synthetic fibres.
- Do not apply if the ambient or substrate temperature is below +5°C or above +35°C.
- Treat any algae and green mould on the roof with **GARDEN CLEAN GREEN REMOVER** or **GARDEN CLEAN SCRUB FREE**.
- With **ROOF RENEW**, you can decide later on whether to install new bitumen roofing on top. Depending on the type of membrane you wish to install, heat welding or glueing with **ROOF GLUE ROOFING** are possible.
- It can also be used on a pitched roof consisting of shingles, rolled roofing or metal. In this case, use several thin coats of **ROOF RENEW**.
- Clean your tools with white spirit or turpentine.

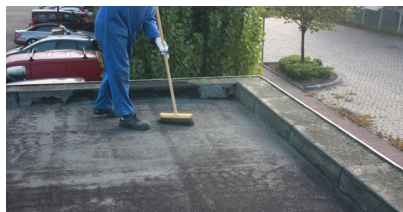
Material	Colour	Contents	Coverage	Drying time	Coats	Overpaintable
Bitumen with fibres	Black	1 kg / 4 kg / 20 kg	2 m ² /kg/coat	24 hours	2	Yes

ROOF RENEW

Waterproof roof protection



INSTRUCTIONS



What do I need?



How do I prepare the surface?

- First remove all dust and grease from the substrate.
- Repair blisters, cracks and tears with **ROOF REPAIR** or the elastic **ROOF SEAL MASTIC SBS** sealant. If necessary, reinforce with **ANTI CRACK**, a tear-resistant polyester tape. Allow these products to dry sufficiently (about 1 week) before proceeding.
- Clean the substrate. As it is impossible to remove all dust particles, fixing the remaining dust with a bonding varnish is recommended. Impregnate with the quick-drying **ROOF PRIMER ROOFING** bonding varnish to ensure optimum adhesion.
- Always use **ROOF PRIMER ROOFING** on metal roofs.



How do I use the product?

- Stir the product well.
- Apply two cross coats of **ROOF RENEW** with a brush. Use about 0.5 kg/m²/coat with an interval of 24 hours. Slate granules can be sprinkled into the last wet coat for additional UV protection.

Usage 1 kg ±1 m ²	Drying Time 24 hrs	Cleaning Icon of a brush and a bucket with a cross through it, indicating that the product is not to be cleaned with water.
---	---------------------------------	---

Would you like more information?

We are ready to answer all your questions.

Feel free to contact us:

Belgium: 03 248 30 00 or info@aquaplan.com

The Netherlands: 0162 42 29 00 or verkoop-dhz@martensgroep.eu

Website: www.aquaplan.com

