

# AQUA TILE "CLASSIC" SMOOTH

Lay 35 tiles in one go



## Product description

Universal 1 m<sup>2</sup> galvanised metal tile roofing sheet for all pitched roofs. It allows you to install 35 tiles in one go, and the adapted tile profile for smaller roof areas provides a more aesthetic final result. Each sheet is 5 tiles wide and 7 tiles high.

Its ingenious design (35 tiles per sheet) makes it suitable for any roof. The tiles can be overlapped both vertically and horizontally without cutting and/or trimming. Quick, easy, simple and no waste, which is good for the environment.

## Application

For all pitched roofs, both old and new roof structures, with a minimum pitch of 10°, such as garden sheds, holiday homes, carports, outbuildings, gazebos, chicken coops, rabbit hutches, etc.

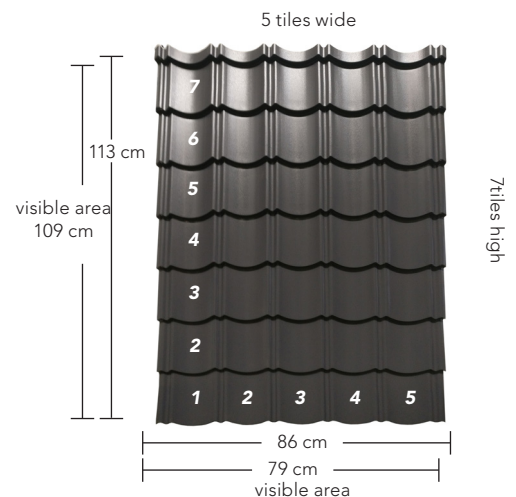
## Advantages

- ▶ Quick & easy installation without cutting or trimming
- ▶ Strong, durable & soundproof
- ▶ No reinforced roof structure required
- ▶ Apply directly to existing roof covering

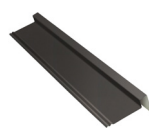
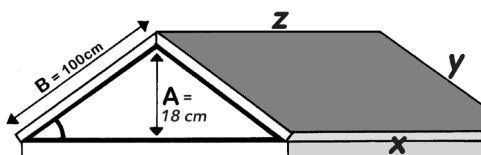


## How much product do I need?

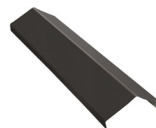
- X Take the total width of the roof, divide by 79 (max. visible area) and round up. Ex.  $252/79 = 3.2$  so 4 sheets
- Y Take the total length of the roof, divide by 109 (max. visible area) and round up.  
Ex.  $210/109 = 1.9$  so 2 sheets For a 252 x 210 roof =  $4 \times 2 = 8$  sheets
- W Divide the length of the roof by 81 and round up.  
Multiply by 2 for the left and right sides.  
Ex.  $210/81 = 2.59$  so  $3 \times 2 = 6$  verge caps
- Z Divide the width of the roof by 81 and round up.  
Ex.  $252/81 = 3.11 = 4$  ridge caps



HEIGHT (A) MUST BE MIN. 18 CM PER 100 CM (B)



Verge cap  
Length 91 cm



Ridge cap  
Length 91 cm



Ridge cap end  
2 per roof  
(only when using verge caps)



Self-tapping screw  
with EPDM seal  
(40 screws per box)

Material	Colour	Contents	Coverage	Drying time	Coats	Overpaintable
Metal	Charcoal	1 sheet of 113 cm x 86 cm	About 1 m <sup>2</sup> /sheet See our calculator	/	1	No

PRODUCT DATA SHEET

# AQUA TILE "CLASSIC" SMOOTH

Lay 35 tiles in one go



## What do I need?



## How do I prepare the surface?

- Always work on a solid, sound and nailable surface.
- When renovating, the existing roof covering (shingles or bitumen sheets) does not have to be removed; it can serve as a suitable underlay.
- For new constructions, a bitumen underlay is recommended. Use **ROOF BASE STICK**, Roof Base Semi Stick, Roof Base Fix or Glass fleece 3TT.
- **AQUA TILE** is not suitable for roofs with a pitch of less than 10°. A roof pitch of 10° corresponds to a value (= A) of approx. 18 cm per 100 cm of sloping roof (= B). (see illustration on page 1)

## How do I use the product?

INSTRUCTIONS



- 1 First attach the verge caps on both sides of the roof. Always start at the bottom and secure them at the bottom along the outside with 1 single screw.



- 2 Place a chalk line about 5 cm from the top of the ridge. This will be the top of the last row of roofing sheets.



- 3 Then place the other verge caps on both sides, spreading them evenly from the chalk line across the height of the roof with an overlap of min. 25 mm. Secure them in place with self-tapping screws.



- 4 Each verge cap has a neutral zone of max. 7.5 cm. This creates a neutral space along the entire width of the roof of up to 2 x 7.5 cm, which is equivalent to the width of a full tile (= 15 cm). The sheets are evenly distributed across this space.



- 5 Always work per full row, from left to right and from bottom to top. Distribute the sheets evenly across the width and height of the roof.



- 6 Distribute the bottom row of sheets evenly between the verge caps and secure them at the bottom with 2 self-tapping screws. Always screw into the valley of the tile about 2 cm below the nose.

# AQUA TILE "CLASSIC" SMOOTH

Lay 35 tiles in one go



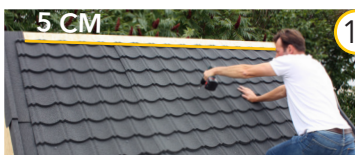
Always use the full width of the sheet (= 5 tiles) and always install the next sheet on top of the gutter/end of the previous sheet.



Slide the last sheet as far as necessary under the second-to-last sheet and secure with the self-tapping screws.



Start the next row in the same way as above.



Place the top row of sheets approx. 5 cm from the highest point of the ridge (= chalk line) before installing the ridge caps. Screw each sheet extra tight with the materials developed for this purpose. Use about 9 screws per sheet.



Seal the end of the ridge by attaching the ridge cap end over the verge caps. Position the V-shaped notch flush with the highest point of the ridge and screw tight. Bend the upright lips towards the roof.



Distribute the ridge caps evenly along the entire length of the roof. Secure them at the ends of the verge caps and the overlaps.

## Handy tips?

- Always use the special galvanised and coated self-tapping screws with EPDM seal.
- Never use an angle grinder; use tin shears or a nibbler.
- Always install an underlay to prevent possible moisture damage due to condensation.
- Always store **AQUA TILE** sheets and accessories in a dry place.
- Apply directly over existing roof covering - no need to remove.
- High resistance to aggressive weather conditions.
- Do not stack pallets.
- Take the necessary precautions to prevent falls.
- Immediate waterproofing.
- Soundproofing due to stone granulate finish.
- Fire, storm and hail resistant.
- No reinforced roof structure required.

## Would you like more information?

We are ready to answer all your questions.

Feel free to contact us:

Belgium: 03 248 30 00 or [info@aquaplan.com](mailto:info@aquaplan.com)

The Netherlands: 0162 42 29 00 or [verkoop-dhz@martensgroep.eu](mailto:verkoop-dhz@martensgroep.eu)

Website: [www.aquaplan.com](http://www.aquaplan.com)

